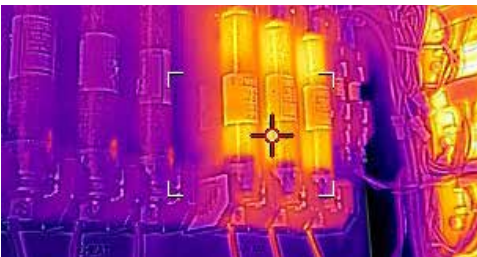




INFRARED CAMERA WITH MSX® & WI-FI

## FLIR Ex-Series™

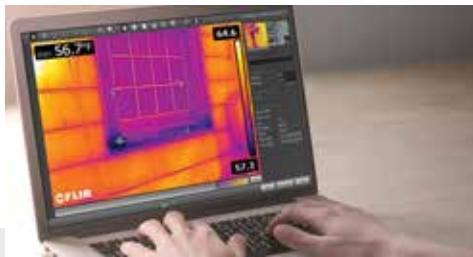
FLIR E4, E5-XT, E6-XT, and E8-XT are powerful, cost-effective, easy-to-use troubleshooting tools for building, electrical, and mechanical applications. With four resolution options—up to 320 × 240 infrared pixels—and the ability to accurately measure temperatures from -20°C to 550°C/-4°F to 1022°F (E6-XT and E8-XT), the Ex-Series has models to fit your target size, working distance, visual detail needs, and budget. All models include MSX® technology for extraordinary thermal imaging detail. Wi-Fi connectivity to smartphones and tablets via the FLIR Tools® Mobile app makes sharing images and sending reports from any location easier, enabling you to make critical decisions faster. With Ex-Series cameras, you can gain the competitive advantage by providing clients with thermal images that clearly reveal the source of electrical, mechanical, and building-related problems.



### EASY TO USE

Intuitive graphic interface simplifies measurements in both thermal and MSX mode

- Fully automatic and focus-free
- Accurately measure your target using center spot or max/min area box
- Navigate easily to on-screen settings, image modes, and measurement tools using simple button controls
- Activate MSX to enhance IR images with visual detail for better perspective and interpretation



### CONVENIENT TO SHARE IMAGES AND FINDINGS

Download images, create reports, and share what you've found instantly

- Records standard JPEGs with embedded temperature data for easy sharing with clients
- Wi-Fi connectivity to mobile devices via the FLIR Tools Mobile app
- Rapid Wi-Fi or USB image transfer for documentation
- Image analysis and editing, plus report creation, through FLIR Tools



### COMPACT AND RUGGED

Built for portability and safe, efficient use in harsh environments

- Lightweight and well-balanced at just 1.2 lbs (0.575 kg)
- Withstands a 2-meter drop test
- IP54 Enclosure provides a high level of protection against dust and water
- Comes with 2-year warranty coverage on the camera and 10-year coverage for the detector

## SPECIFICATIONS

Image and optical data	E4	E5-XT	E6-XT	E8-XT
IR resolution	80 × 60 (4,800 pixels)	160 × 120 (19,200 pixels)	240 × 180 (43,200 pixels)	320 × 240 (76,800 pixels)
Thermal sensitivity/NETD	<0.15°C (0.27°F) / <150 mK	<0.10°C (0.27°F) / <100 mK	<0.06°C (0.11°F) / <60 mK	<0.05°C (0.09°F) / <50 mK
Spatial resolution (IFOV)	10.3 mrad	5.2 mrad	3.4 mrad	2.6 mrad
Field of view (FOV)	45° × 34°			
F-number	1.5			
Image frequency	9 H			
Focus	Focus-free			
Detector data				
Detector type	Focal Plane Array (FPA), uncooled microbolometer			
Spectral range	7.5–13 μm			
Image presentation and modes				
Display	3" 320 × 240 color LCD			
Image adjustment	Automatic adjust/lock image			
Image modes	Thermal MSX, thermal, picture-in-picture, thermal blending, digital camera			
Color palettes	Iron, Rainbow, Black & White			
Measurement and analysis				
Object temperature range	-20°C to 250°C (-4°F to 482°F)	-20°C to 400°C (-4°F to 752°F) in two ranges	-20°C to 550°C (-4°F to 1022°F) in two ranges	-20°C to 550°C (-4°F to 1022°F) in two ranges
Accuracy	±2°C (±3.6°F) or ±2% of reading for ambient temperature 10°C to 35°C (50°F to 95°F) and object temperature above 0°C (32°F)			
Spotmeter	Center spot			
Area	Box with max/min			
Isotherm	Above alarm, below alarm			
Data communication and interfaces				
Interfaces	USB Micro: data transfer to and from PC and Mac device			
Wi-Fi	Peer-to-peer or infrastructure			
File format	Standard JPEG, 14-bit measurement data included			
General				
Operating temperature range	15°C to 50°C (5°F to 122°F)			
Battery	Rechargeable 3.6 V Li ion battery			
Battery operating time	Approx. 4 hours at 25°C (77°F) ambient temperature and typical use			
Battery charging time	2.5 hours to 90% capacity in camera. 2 hours in charger			
Drop	2 m (6.6 ft.)			
Camera weight, incl. battery	0.575 kg (1.27 lb.)			
Camera size (L × W × H)	244 × 95 × 140 mm (9.6 × 3.7 × 5.5 in)			
Box contents	Infrared camera, hard transport case, battery, USB cable, power supply/charger with EU, UK, US and Australian plugs, printed documentation			

Specifications are subject to change without notice.



The World's Sixth Sense®